



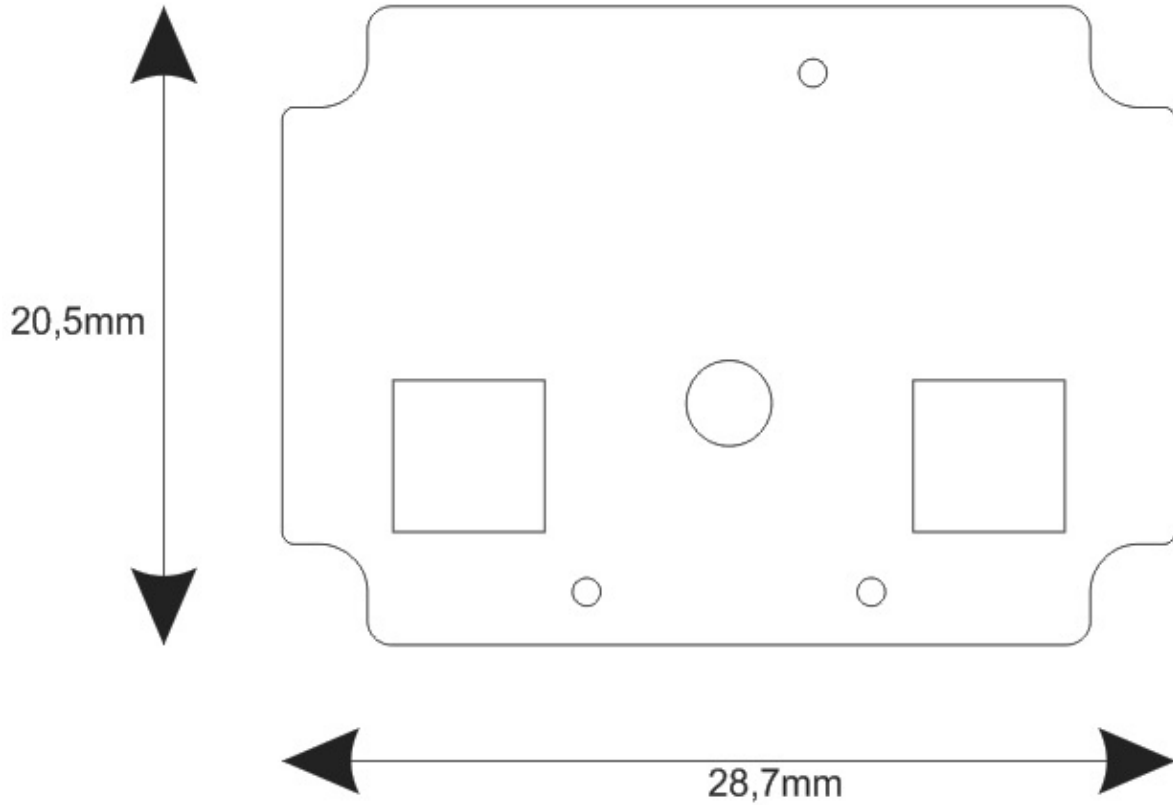
Panel Arranque de Motores Airbus A320
A320 EngineStart panel

Datos técnicos:

Technical data:

Las medidas del panel (ancho x alto x profundidad) son: 28,7 x 20.5 x 6 mm.

The measurements of the panel (width x height x depth) are: 28,7 x 20,5 x 6 mm.

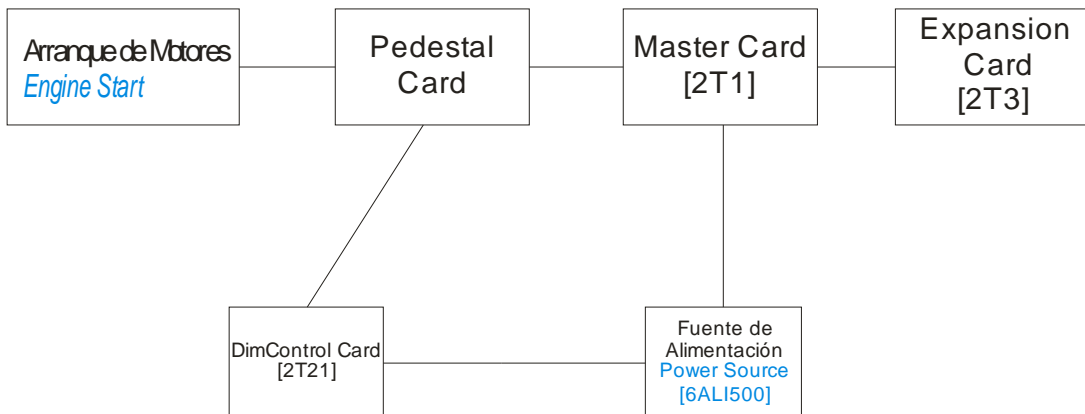


Datos de Montaje:

Assembly data:

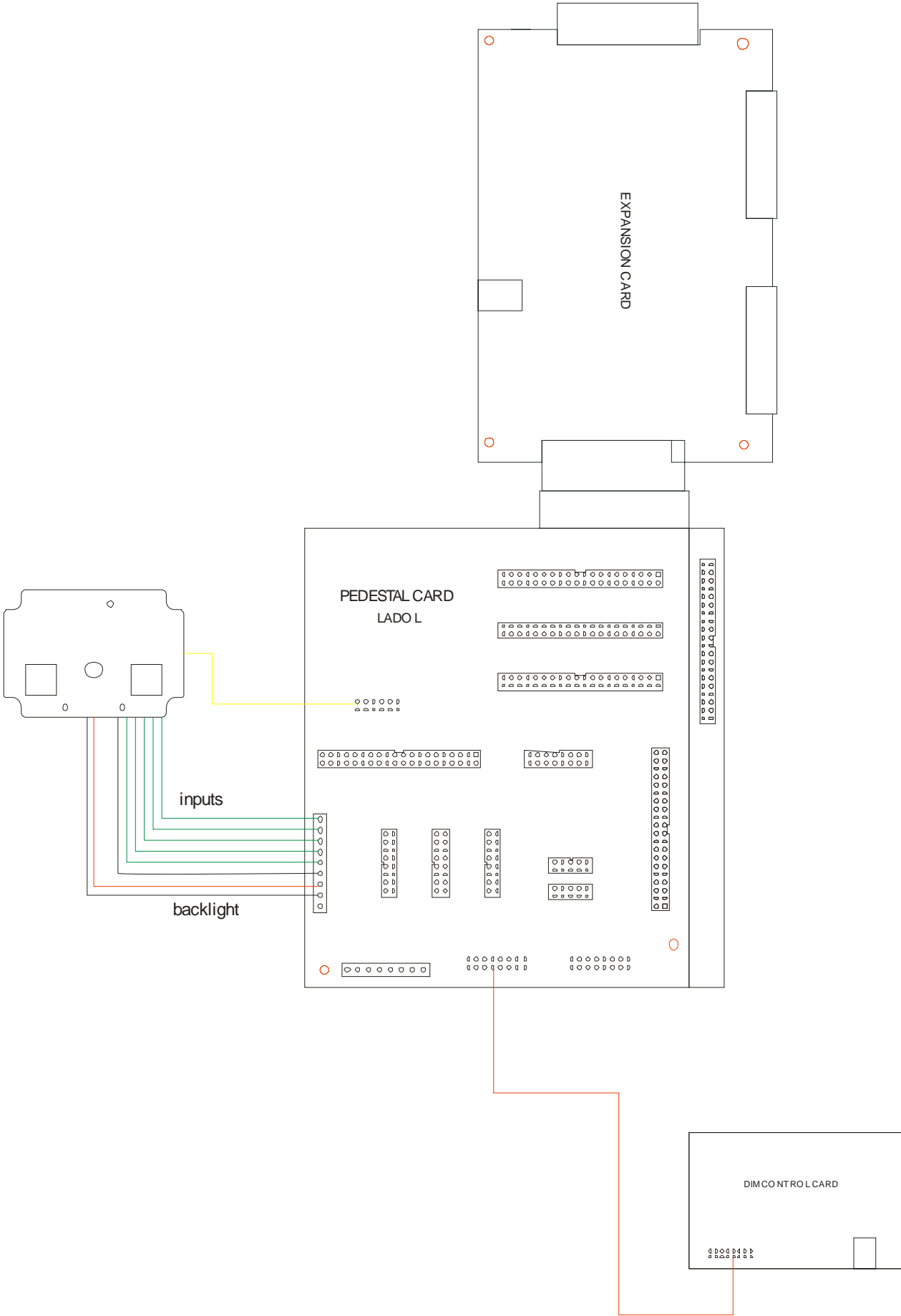
Esquema de montaje:

Assembly scheme:



* Ejemplo de cableado del panel.

Panel wiring example.



* Cablear el panel a las tarjetas pedestal.

Wiring the panel to the pedestal card.

* Atornillar los tornillos del panel en la estructura del Pedestal.

Fix the panel screws into the Pedestal structure.

Precaución:

Caution:

* Montar y fijar adecuadamente el panel.

Mount and fix the panel properly.

* Panel comprobado para funcionar a la tensión de salida que proporciona la tarjeta master.

Panel checked to operate at the output voltage provided by the Opencockpits Master Card.

Declaración de entradas y salidas:

I/O declaration:

```
//ENGINE START INPUTS
VAR 0001, NAME ENG_M1, STATIC, LINK IOCARD_SW, DEVICE X, INPUT 112
VAR 0002, NAME ENG_M2, STATIC, LINK IOCARD_SW, DEVICE X, INPUT 113
VAR 0003, NAME ENG_CRACK, STATIC, LINK IOCARD_SW, DEVICE X, INPUT 114
VAR 0004, NAME ENG_NORM, STATIC, LINK IOCARD_SW, DEVICE X, INPUT 115
VAR 0005, NAME ENG_IGN, STATIC, LINK IOCARD_SW, DEVICE X, INPUT 116

//ENGINE START OUPUTS
VAR 0006, NAME ENG_K1UP, STATIC, LINK IOCARD_OUT, DEVICE X, OUTPUT 24
VAR 0007, NAME ENG_K1DW, STATIC, LINK IOCARD_OUT, DEVICE X, OUTPUT 23
VAR 0008, NAME ENG_K2UP, STATIC, LINK IOCARD_OUT, DEVICE X, OUTPUT 26
VAR 0009, NAME ENG_K2DW, STATIC, LINK IOCARD_OUT, DEVICE X, OUTPUT 25
```